

Clearing and Acknowledging Alarms in WebView

1 Select the Options menu on the top right corner of the page.

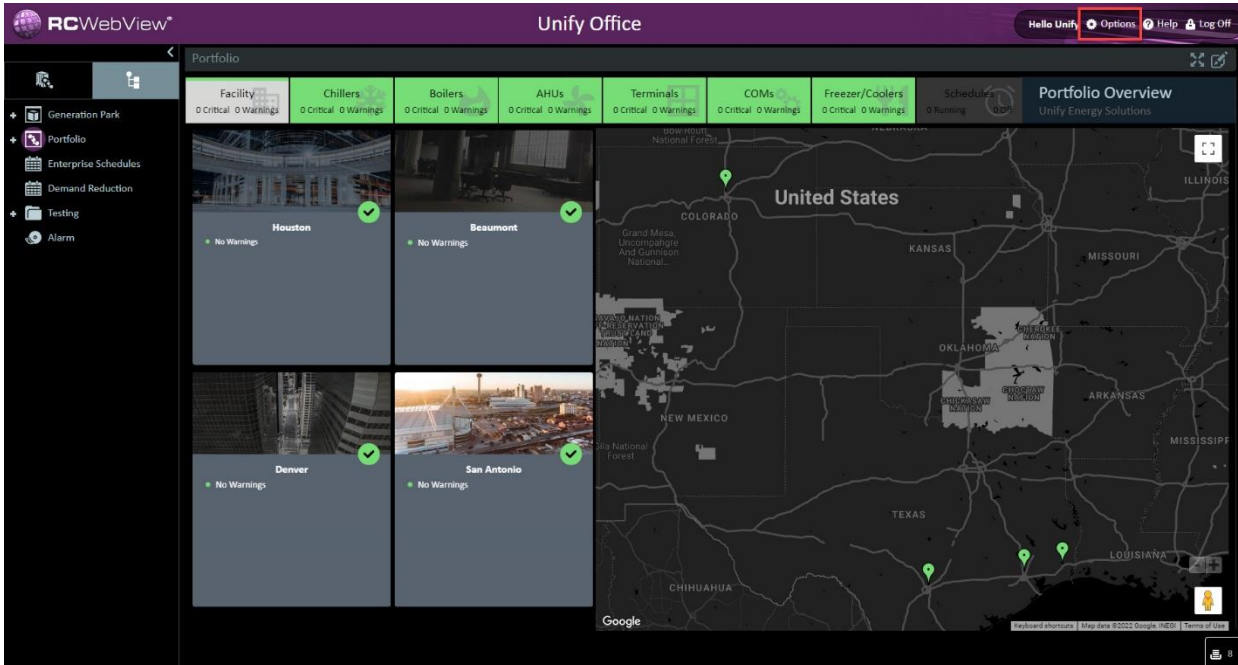


Figure 1 Options Menu

2 From the Options drop-down menu, select Alarms.

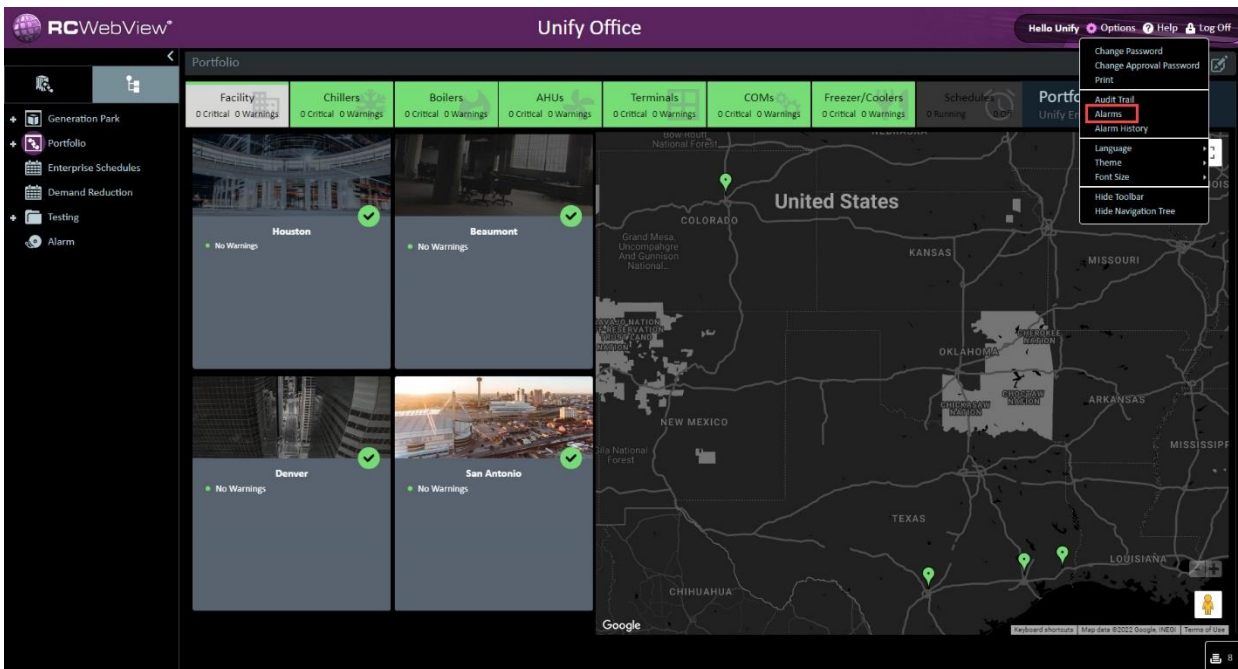
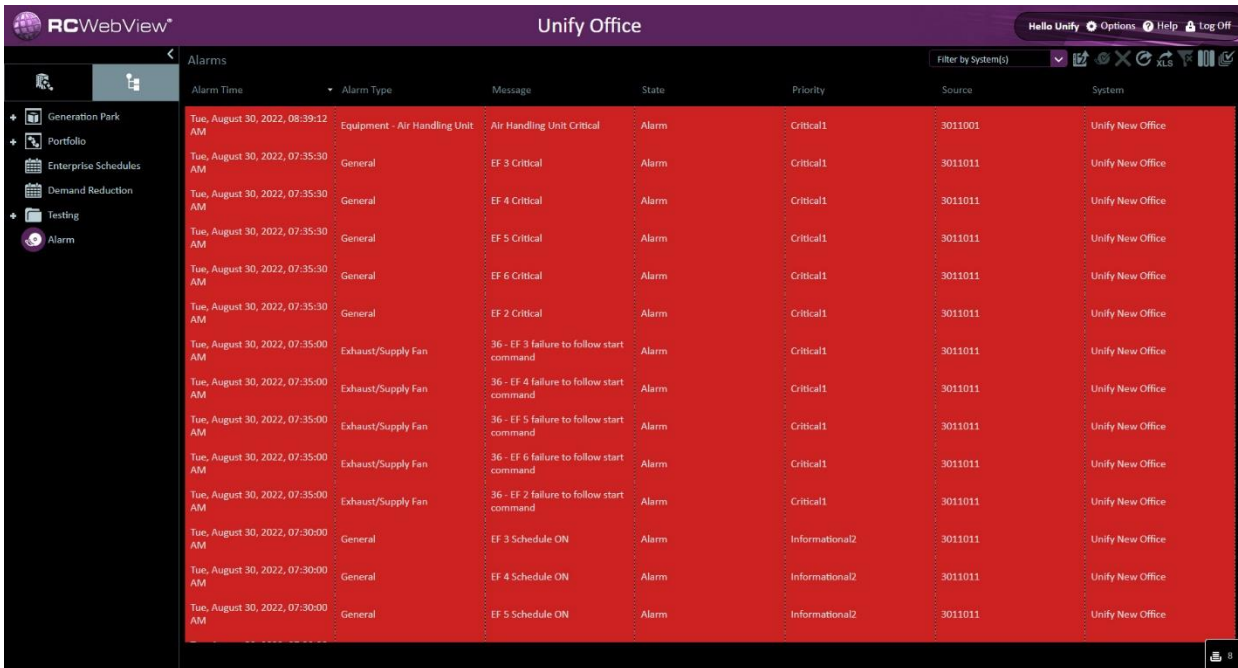


Figure 2 Alarms in Options Menu

3 The alarms worksheet is locational and will display the current alarms for the controller that was viewed.

3.1 Selecting alarms while viewing a site summary will display all alarms available; selecting alarms while viewing equipment graphics will only display alarms from the equipment controller that was viewed.



Alarm Time	Alarm Type	Message	State	Priority	Source	System
Tue, August 30, 2022, 08:39:12 AM	Equipment - Air Handling Unit	Air Handling Unit Critical	Alarm	Critical1	3011001	Unify New Office
Tue, August 30, 2022, 07:35:30 AM	General	EF 3 Critical	Alarm	Critical1	3011011	Unify New Office
Tue, August 30, 2022, 07:35:30 AM	General	EF 4 Critical	Alarm	Critical1	3011011	Unify New Office
Tue, August 30, 2022, 07:35:30 AM	General	EF 5 Critical	Alarm	Critical1	3011011	Unify New Office
Tue, August 30, 2022, 07:35:30 AM	General	EF 6 Critical	Alarm	Critical1	3011011	Unify New Office
Tue, August 30, 2022, 07:35:30 AM	General	EF 2 Critical	Alarm	Critical1	3011011	Unify New Office
Tue, August 30, 2022, 07:35:00 AM	Exhaust/Supply Fan	36 - EF 3 failure to follow start command	Alarm	Critical1	3011011	Unify New Office
Tue, August 30, 2022, 07:35:00 AM	Exhaust/Supply Fan	36 - EF 4 failure to follow start command	Alarm	Critical1	3011011	Unify New Office
Tue, August 30, 2022, 07:35:00 AM	Exhaust/Supply Fan	36 - EF 5 failure to follow start command	Alarm	Critical1	3011011	Unify New Office
Tue, August 30, 2022, 07:35:00 AM	Exhaust/Supply Fan	36 - EF 6 failure to follow start command	Alarm	Critical1	3011011	Unify New Office
Tue, August 30, 2022, 07:35:00 AM	Exhaust/Supply Fan	36 - EF 2 failure to follow start command	Alarm	Critical1	3011011	Unify New Office
Tue, August 30, 2022, 07:30:00 AM	General	EF 3 Schedule ON	Alarm	Informational2	3011011	Unify New Office
Tue, August 30, 2022, 07:30:00 AM	General	EF 4 Schedule ON	Alarm	Informational2	3011011	Unify New Office
Tue, August 30, 2022, 07:30:00 AM	General	EF 5 Schedule ON	Alarm	Informational2	3011011	Unify New Office

Figure 3 Alarms Page

3.2 Clear all Filters is available on the top right of the Alarms page if needing to view all alarms at any point.

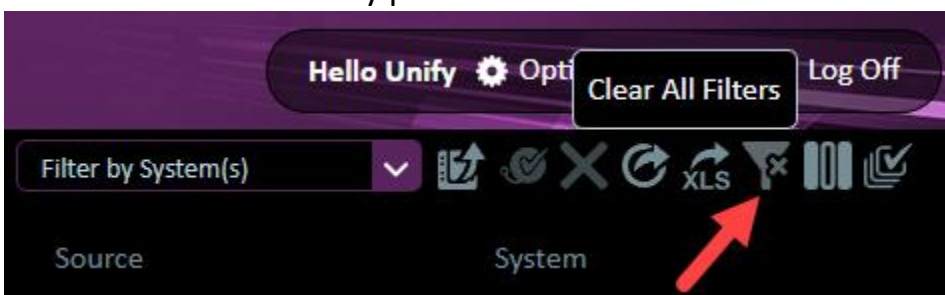


Figure 4 Clear All Filters

3.3 The Alarms page can be filtered by a specific system by using the drop-down menu.

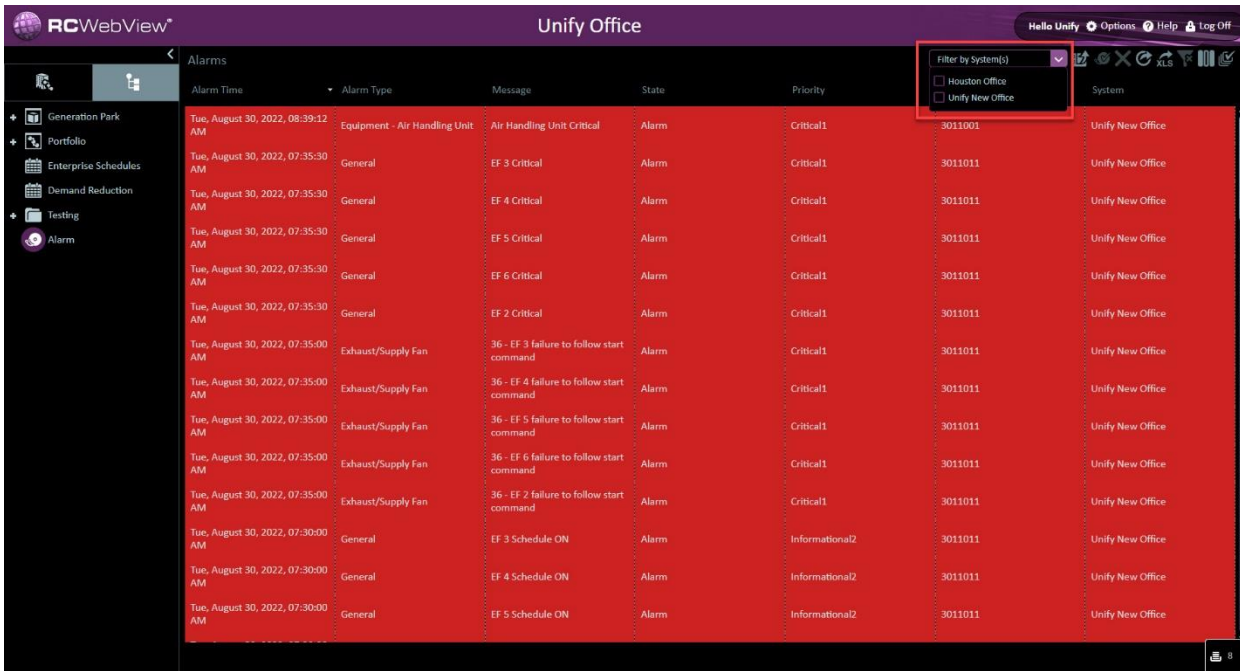


Figure 5 System Filter

4 Select alarms by left clicking the entry which turns the background color grey.

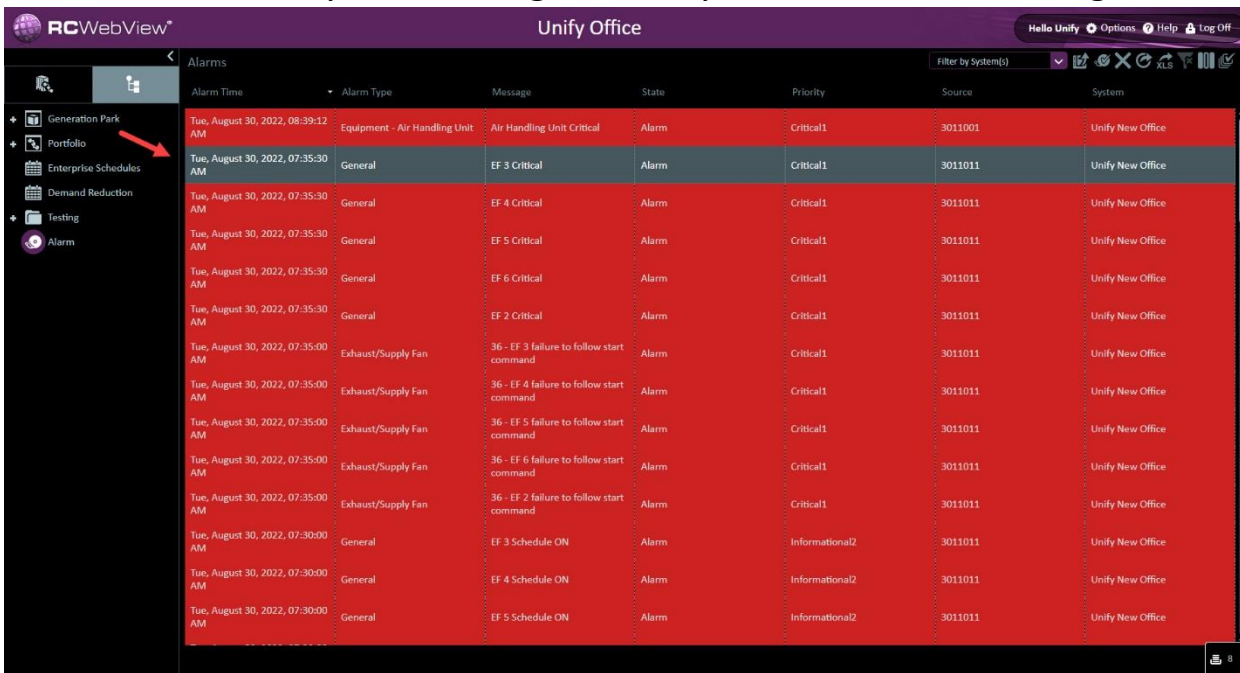
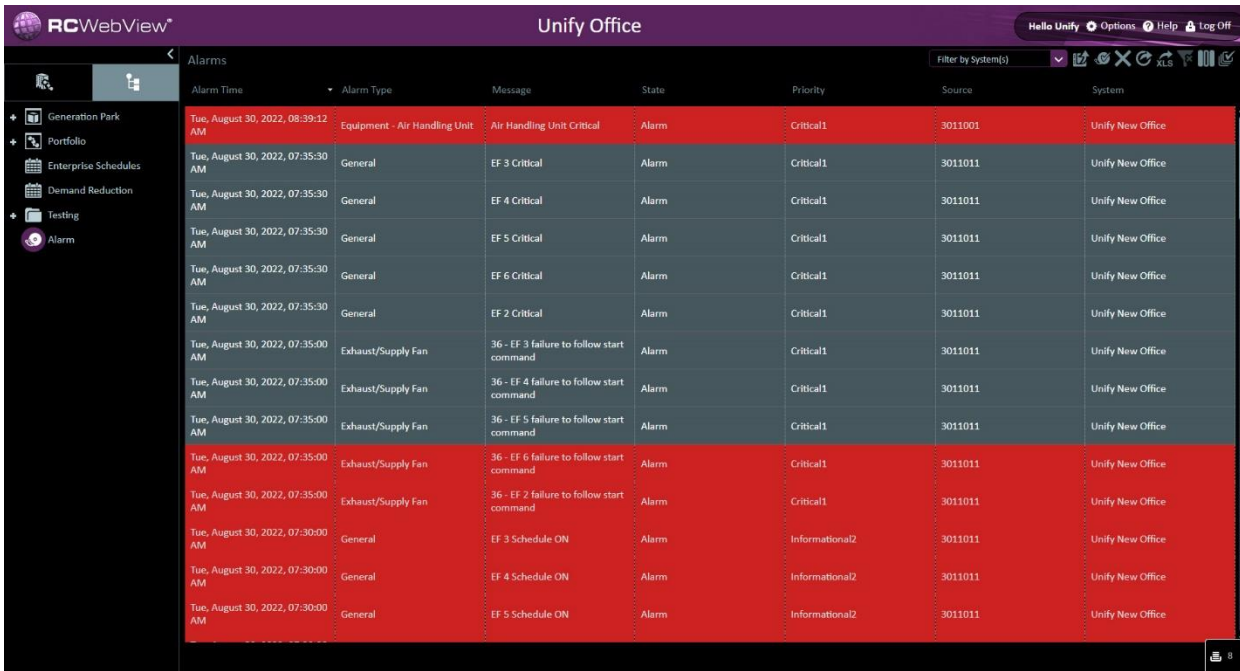


Figure 6 Selected Alarm

4.1 Control click and shift click are supported for selecting multiple alarm entries.



The screenshot shows the 'Alarms' section of the Unify Office interface. A table lists various alarm entries. The first 15 rows are highlighted in red, indicating they are selected. The table has columns for Alarm Time, Alarm Type, Message, State, Priority, Source, and System.

Alarm Time	Alarm Type	Message	State	Priority	Source	System
Tue, August 30, 2022, 08:39:12 AM	Equipment - Air Handling Unit	Air Handling Unit Critical	Alarm	Critical1	3011001	Unify New Office
Tue, August 30, 2022, 07:35:30 AM	General	EF 3 Critical	Alarm	Critical1	3011011	Unify New Office
Tue, August 30, 2022, 07:35:30 AM	General	EF 4 Critical	Alarm	Critical1	3011011	Unify New Office
Tue, August 30, 2022, 07:35:30 AM	General	EF 5 Critical	Alarm	Critical1	3011011	Unify New Office
Tue, August 30, 2022, 07:35:30 AM	General	EF 6 Critical	Alarm	Critical1	3011011	Unify New Office
Tue, August 30, 2022, 07:35:30 AM	General	EF 2 Critical	Alarm	Critical1	3011011	Unify New Office
Tue, August 30, 2022, 07:35:00 AM	Exhaust/Supply Fan	36 - EF 3 failure to follow start command	Alarm	Critical1	3011011	Unify New Office
Tue, August 30, 2022, 07:35:00 AM	Exhaust/Supply Fan	36 - EF 4 failure to follow start command	Alarm	Critical1	3011011	Unify New Office
Tue, August 30, 2022, 07:35:00 AM	Exhaust/Supply Fan	36 - EF 5 failure to follow start command	Alarm	Critical1	3011011	Unify New Office
Tue, August 30, 2022, 07:35:00 AM	Exhaust/Supply Fan	36 - EF 6 failure to follow start command	Alarm	Critical1	3011011	Unify New Office
Tue, August 30, 2022, 07:35:00 AM	Exhaust/Supply Fan	36 - EF 2 failure to follow start command	Alarm	Critical1	3011011	Unify New Office
Tue, August 30, 2022, 07:30:00 AM	General	EF 3 Schedule ON	Alarm	Informational2	3011011	Unify New Office
Tue, August 30, 2022, 07:30:00 AM	General	EF 4 Schedule ON	Alarm	Informational2	3011011	Unify New Office
Tue, August 30, 2022, 07:30:00 AM	General	EF 5 Schedule ON	Alarm	Informational2	3011011	Unify New Office

Figure 7 Multiple Alarms Selected

4.2 Using the select all icon will select all alarm entries.

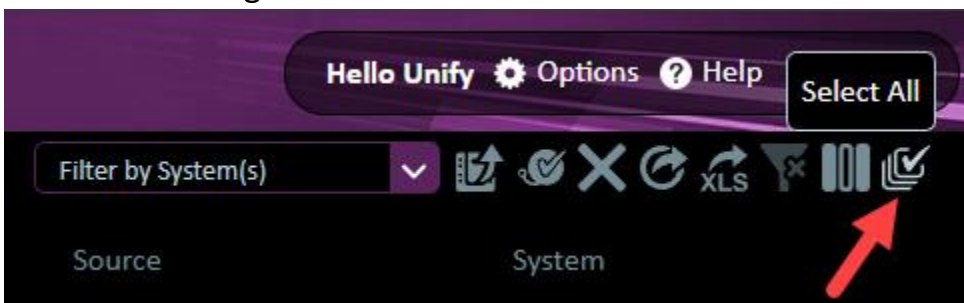


Figure 8 Select All Icon

5 Once the necessary alarms are selected, they can be acknowledged and/or cleared by using the alarms menu.

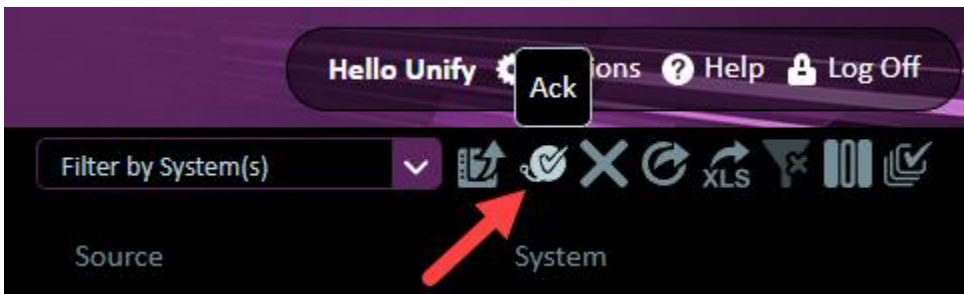


Figure 9 Acknowledge Icon

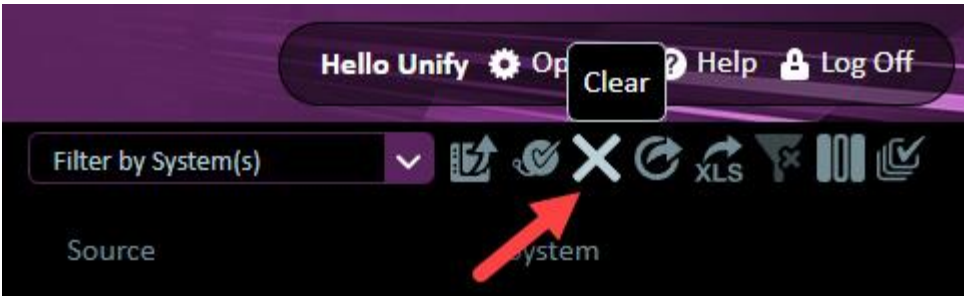


Figure 10 Clear Icon

5.1 Clearing alarms will remove them from the alarms page.

5.1.1 Cleared alarms are still viewable from the Alarms History page available in the Options menu.

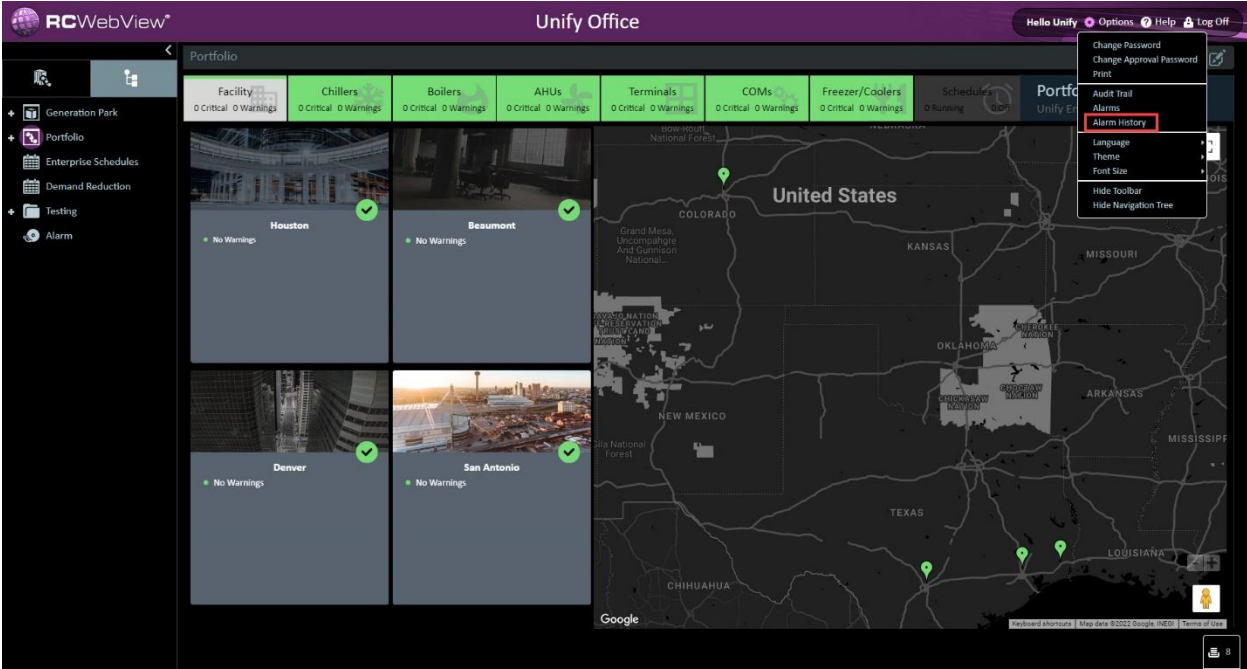


Figure 11 Alarms History in Options Menu