

WebView System Time Instructions

1 System time instructions

1.1 In WebView the system time and date are set per the system being viewed.

1.1.1 It is good practice to select the main floorplan of the facility the system time needs to be set at

1.2 Select the Options menu from the upper right corner of the page.

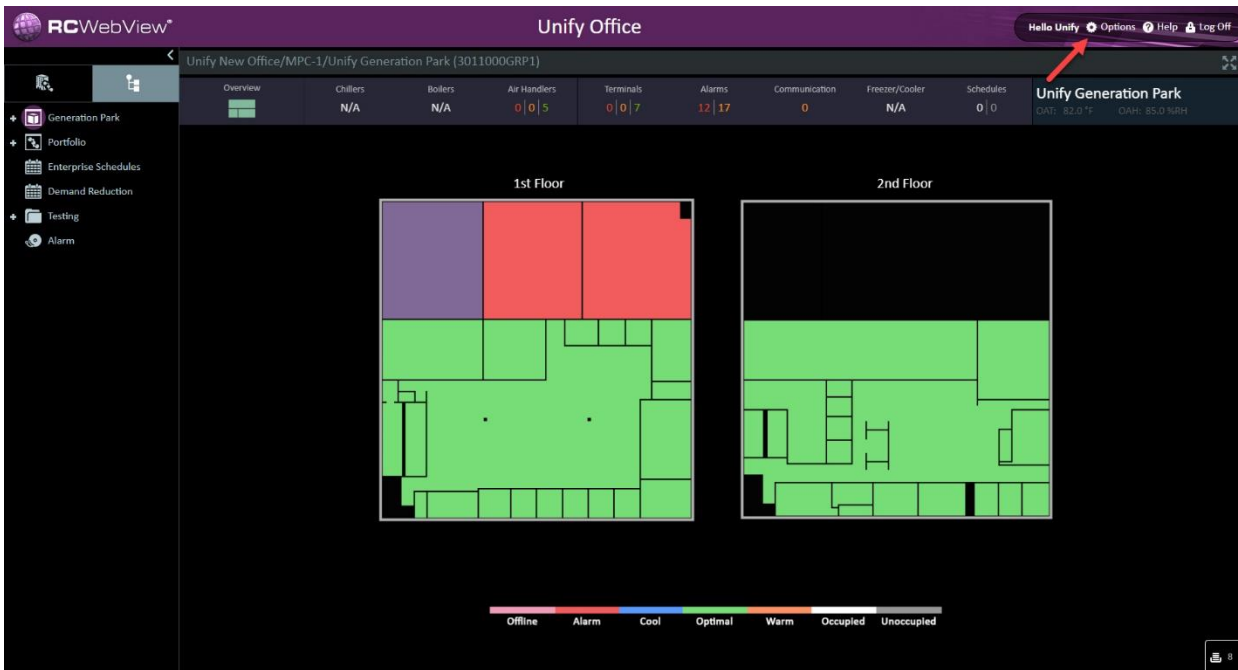


Figure 1 Options Menu

1.3 From the Options drop down menu select Set System Time.

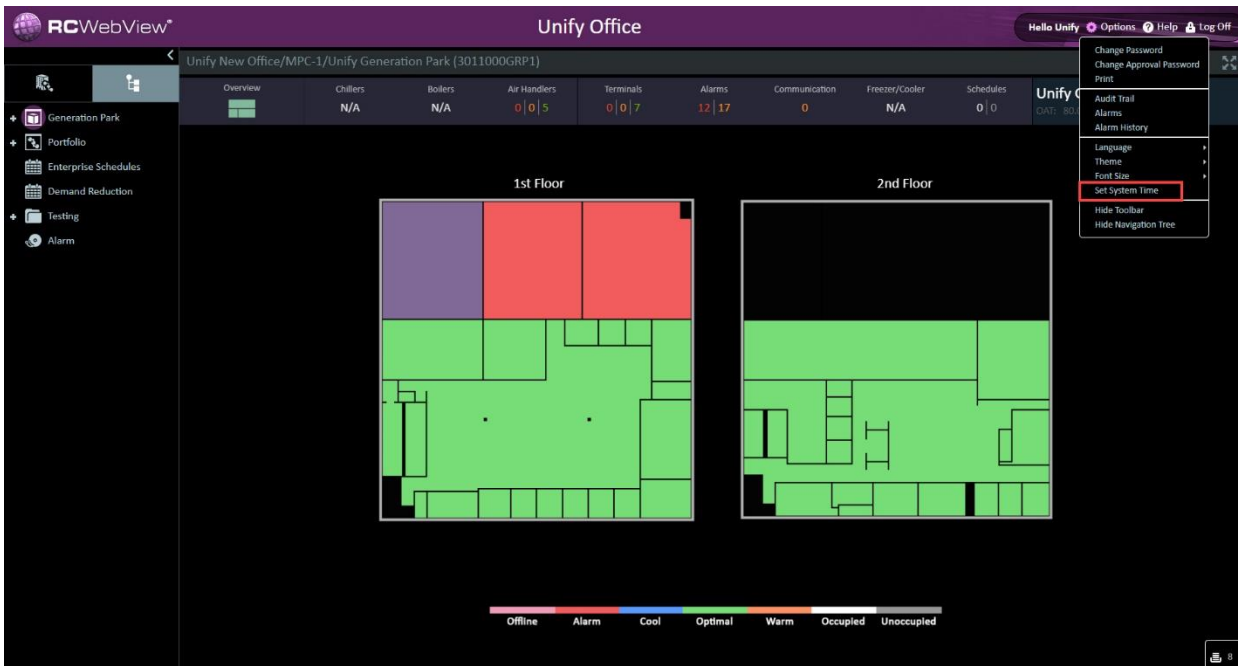


Figure 2 Select System Time

- 1.4 A pop-up window will display with the current system time as well as the new system time.

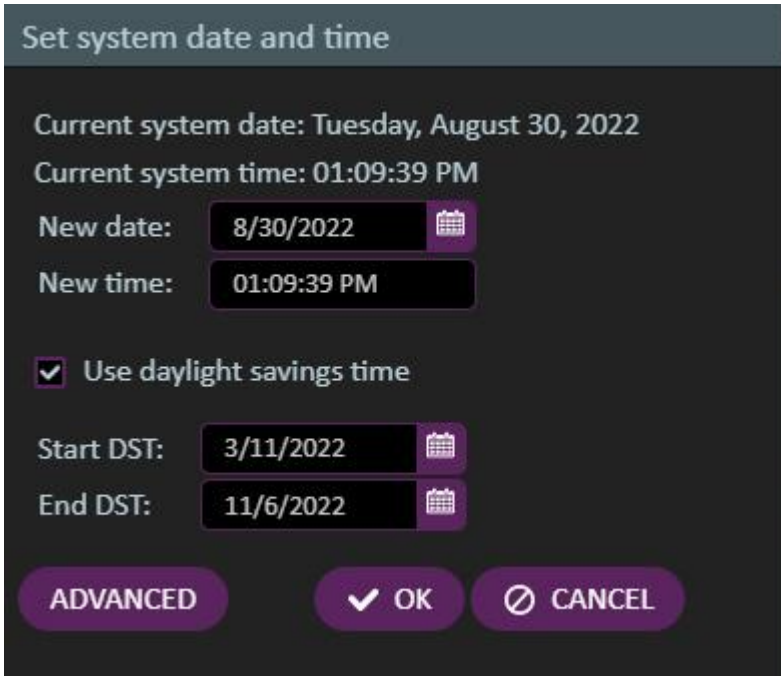


Figure 3 Review System Time and Date

- 1.5 Verify the new date and time is correct then select OK
- 1.6 A warning pop up will display, read and select YES if the system time needs to be changed.

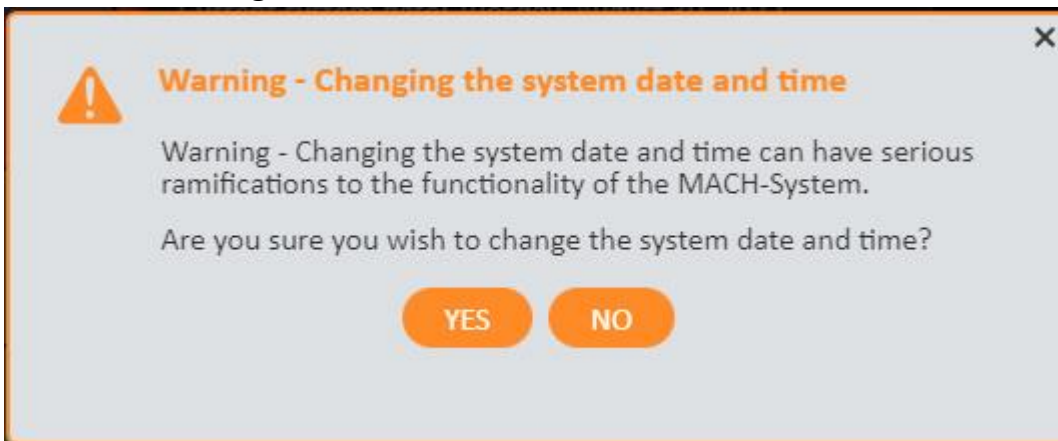


Figure 4 Warning Pop Up

- 1.7 The system time is now set for that system and can be repeated for each system as needed.