

# Trend Log Creation

## Table of Contents

- 1 Creating a new trend log from the equipment graphic ----- 1
- 2 Creating a new trend log from the system tree----- 13

## 1 Creating a new trend log from the equipment graphic

1.1 Navigate to the equipment graphic that requires a new trend log.

1.2 Select either Single Point Trends or Multipoint Trends.

1.2.1 Runtime reports are automatically created for binary objects within the controller.

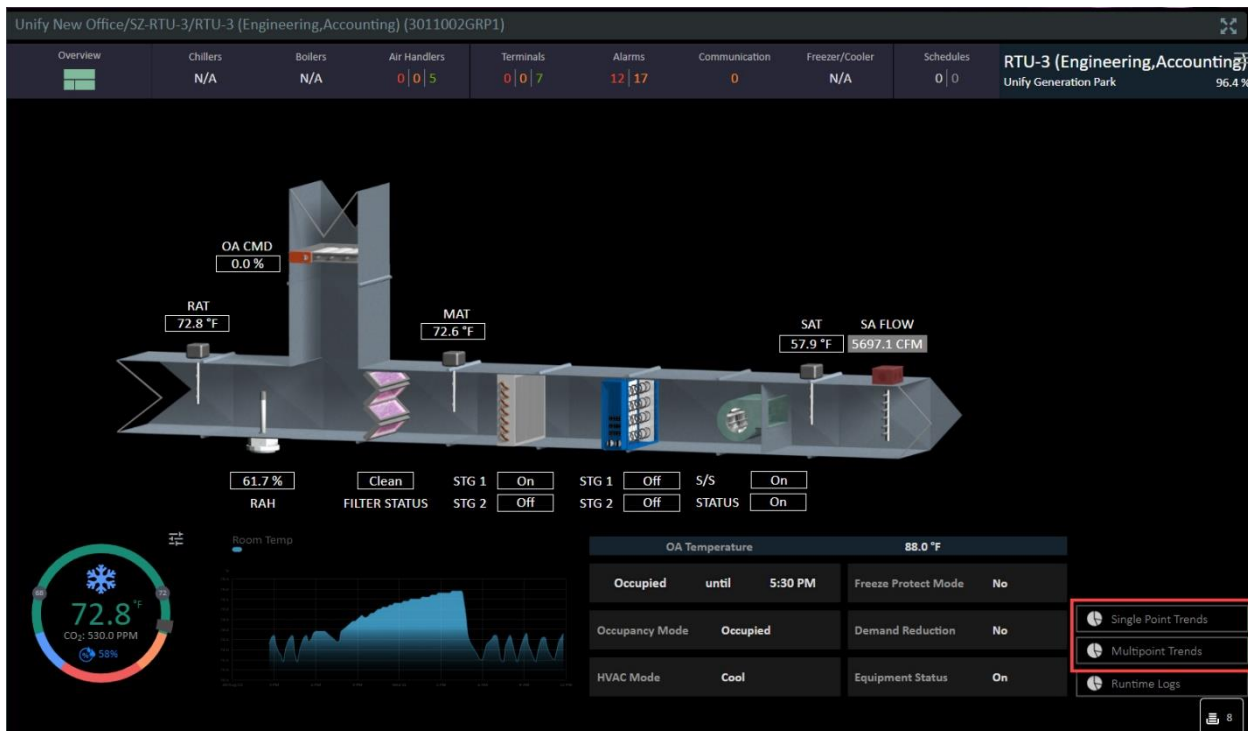


Figure 1 Select Trend Log

### 1.3 After selecting the trend log link the trend log worksheet will open.

Instance	Name	Point 1	Point 2	Point 3	Point 4	Point 5	Point 6	Point 7	Point 8	Enable	Log Type	Interval	Bytes	Length	Description	Advanced
1	F01-RTU-3-MPT	F01-RTU-3-PRG-ACT-RMT (3011002)	F01-RTU-3-PRG-ADJ-CL-SP (3011002)	F01-RTU-3-PRG-ADJ-HT-SP (3011002)	F01-RTU-3-S/S (3011002)	F01-RTU-3-FAN-AMPS (3011002)	F01-RTU-3-CL-STG1 (3011002)	F01-RTU-3-CL-STG2 (3011002)	F01-RTU-3-SAT (3011002)	<input checked="" type="checkbox"/>	Polled	00:10:00	4	512	...	✳
2	F01-RTU-3-OSS-TGR-MPT	F01-RTU-3-S/S (3011002)	F01-RTU-3-PRG-OCC-MODE (3011002)	F01-RTU-3-PRG-OPT-ST-RMT (3011002)	F01-RTU-3-PRG-OPT-ST-ACT-RECV (3011002)	F01-RTU-3-PRG-OPT-ST-ACT-RATE (3011002)	F01-RTU-3-PRG-OPT-ST-ACT-TIME (3011002)	F01-RTU-3-PRG-OPT-ST-MODE (3011002)	F01-RTU-3-PRG-OPT-ST-TIME (3011002)	<input checked="" type="checkbox"/>	Triggered		4	512	...	✳
3	F01-RTU-3-OSS-SCORE-MPT	F01-RTU-3-PRG-OPT-ST-MODE (3011002)	F01-RTU-3-PRG-RECV-RATE (3011002)	F01-RTU-3-PRG-ACT-RMT (3011002)	F01-RTU-3-PRG-OSS-SCORE (3011002)	F01-RTU-3-PRG-CALC-RMT-DEV (3011002)	F01-RTU-3-PRG-COMP2-AMPS (3011002)	F01-RTU-3-PRG-ADJ-CL-SP (3011002)	F01-RTU-3-PRG-ADJ-HT-SP (3011002)	<input checked="" type="checkbox"/>	Triggered		4	128	...	✳
4	F01-RTU-3-OPT-STOP-MPT	F01-RTU-3-S/S (3011002)	F01-RTU-3-PRG-ACT-RMT (3011002)	F01-RTU-3-PRG-OPT-STOP-IN (3011002)	F01-RTU-3-PRG-OCC-MODE (3011002)	F01-RTU-3-PRG-OA-OP-STOP (3011002)	F01-RTU-3-PRG-PLT-OP-STOP (3011002)	F01-RTU-3-COMP2-AMPS (3011002)	F01-RTU-3-PRG-OAT-LOCAL-VAR (3011002)	<input checked="" type="checkbox"/>	Triggered		4	128	...	✳
5	F01-RTU-3-RMT-MPT	F01-RTU-3-S/S (3011002)	F01-RTU-3-PRG-ADJ-CL-SP (3011002)	F01-RTU-3-PRG-ADJ-HT-SP (3011002)	F01-RTU-3-PRG-ACT-RMT (3011002)	F01-RTU-3-SS1-RT (3011002)	F01-RTU-3-SS2-RT (3011002)	F01-RTU-3-RAT (3011002)	F01-RTU-3-SAT (3011002)	<input checked="" type="checkbox"/>	Polled	00:10:00	4	512	...	✳

Figure 2 Trend Log Worksheet

### 1.4 Select the add icon (+) on the top right corner of the page to add a new multipoint trend log.

Instance	Name	Point 1	Point 2	Point 3	Point 4	Point 5	Point 6	Point 7	Point 8	Enable	Log Type	Interval	Bytes	Length	Description	Advanced
1	F01-RTU-3-MPT	F01-RTU-3-PRG-ACT-RMT (3011002)	F01-RTU-3-PRG-ADJ-CL-SP (3011002)	F01-RTU-3-PRG-ADJ-HT-SP (3011002)	F01-RTU-3-S/S (3011002)	F01-RTU-3-FAN-AMPS (3011002)	F01-RTU-3-CL-STG1 (3011002)	F01-RTU-3-CL-STG2 (3011002)	F01-RTU-3-SAT (3011002)	<input checked="" type="checkbox"/>	Polled	00:10:00	4	512	...	✳
2	F01-RTU-3-OSS-TGR-MPT	F01-RTU-3-S/S (3011002)	F01-RTU-3-PRG-OCC-MODE (3011002)	F01-RTU-3-PRG-OPT-ST-RMT (3011002)	F01-RTU-3-PRG-OPT-ST-ACT-RECV (3011002)	F01-RTU-3-PRG-OPT-ST-ACT-RATE (3011002)	F01-RTU-3-PRG-OPT-ST-ACT-TIME (3011002)	F01-RTU-3-PRG-OPT-ST-MODE (3011002)	F01-RTU-3-PRG-OPT-ST-TIME (3011002)	<input checked="" type="checkbox"/>	Triggered		4	512	...	✳
3	F01-RTU-3-OSS-SCORE-MPT	F01-RTU-3-PRG-OPT-ST-MODE (3011002)	F01-RTU-3-PRG-RECV-RATE (3011002)	F01-RTU-3-PRG-ACT-RMT (3011002)	F01-RTU-3-PRG-OSS-SCORE (3011002)	F01-RTU-3-PRG-CALC-RMT-DEV (3011002)	F01-RTU-3-PRG-COMP2-AMPS (3011002)	F01-RTU-3-PRG-ADJ-CL-SP (3011002)	F01-RTU-3-PRG-ADJ-HT-SP (3011002)	<input checked="" type="checkbox"/>	Triggered		4	128	...	✳
4	F01-RTU-3-OPT-STOP-MPT	F01-RTU-3-S/S (3011002)	F01-RTU-3-PRG-ACT-RMT (3011002)	F01-RTU-3-PRG-OPT-STOP-IN (3011002)	F01-RTU-3-PRG-OCC-MODE (3011002)	F01-RTU-3-PRG-OA-OP-STOP (3011002)	F01-RTU-3-PRG-PLT-OP-STOP (3011002)	F01-RTU-3-COMP2-AMPS (3011002)	F01-RTU-3-PRG-OAT-LOCAL-VAR (3011002)	<input checked="" type="checkbox"/>	Triggered		4	128	...	✳
5	F01-RTU-3-RMT-MPT	F01-RTU-3-S/S (3011002)	F01-RTU-3-PRG-ADJ-CL-SP (3011002)	F01-RTU-3-PRG-ADJ-HT-SP (3011002)	F01-RTU-3-PRG-ACT-RMT (3011002)	F01-RTU-3-SS1-RT (3011002)	F01-RTU-3-SS2-RT (3011002)	F01-RTU-3-RAT (3011002)	F01-RTU-3-SAT (3011002)	<input checked="" type="checkbox"/>	Polled	00:10:00	4	512	...	✳

Figure 3 Select + Icon

- 1.5 A pop-up window will appear. Keeping next instance selected will create the new log in the next available location. Selecting specific instance would be used to replace an existing trend log. Enter the new distinct trend log name then select OK.

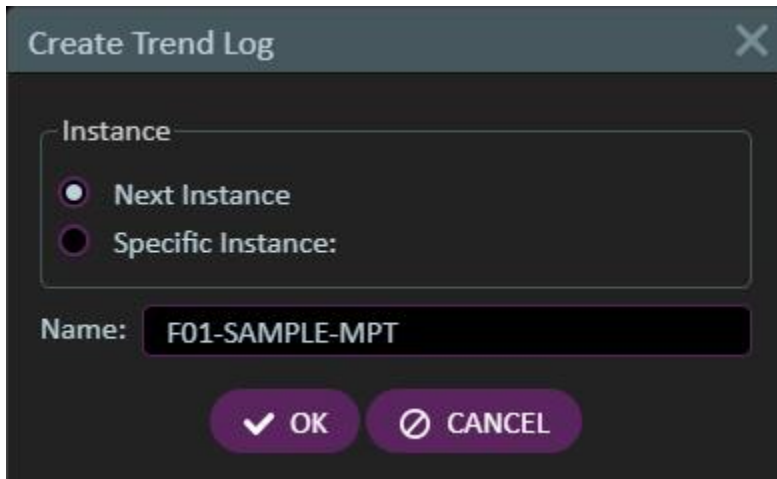


Figure 4 New Trend Name

- 1.6 The new trend log will display at the bottom of the trend log list.

Instance	Name	Point 1	Point 2	Point 3	Point 4	Point 5	Point 6	Point 7	Point 8	Enable	Log Type	Interval	Bytes	Length	Description	Advanced
8	F01-RTU-3-HTG-MPT	F01-RTU-3-S/S (301100)	F01-RTU-3-FAN-AMPS (301100)	F01-RTU-3-HT-STG1 (301100)	F01-RTU-3-HT-STG2 (301100)	F01-RTU-3-SAT (301100)	F01-RTU-3-MAT (301100)	F01-RTU-3-PRG-ACT-RMT (301100)	F01-RTU-3-PRG-ADJ-HT-SP (301100)	<input checked="" type="checkbox"/>	Polled	00:10:00	4	512	...	
9	F01-RTU-3-KW-MPT	F01-RTU-3-CALC-SF-KW (301100)	F01-RTU-3-CALC-COMP1-KW (301100)	F01-RTU-3-CALC-COMP2-KW (301100)	F01-RTU-3-CALC-COND1-FAN-KW (301100)	F01-RTU-3-CALC-COND2-FAN-KW (301100)	F01-RTU-3-CALC-TOTAL-KW (301100)			<input checked="" type="checkbox"/>	Polled	00:02:00	4	512	...	
10	F01-RTU-3-AMPS-MPT	F01-RTU-3-FAN-S/S (301100)	F01-RTU-3-FAN-AMPS (301100)	F01-RTU-3-CL-STG1 (301100)	F01-RTU-3-CL-STG2 (301100)	F01-RTU-3-COMP1-AMPS (301100)	F01-RTU-3-COMP2-AMPS (301100)	F01-RTU-3-COND1-FAN-AMPS (301100)	F01-RTU-3-COND2-FAN-AMPS (301100)	<input checked="" type="checkbox"/>	Triggered		4	512	...	
11	F01-RTU-3-MPT11	F01-RTU-3-S/S (301100)	F01-RTU-3-CL-STG1 (301100)	F01-RTU-3-CL-STG2 (301100)	F01-RTU-3-HT-STG1 (301100)	F01-RTU-3-HT-STG2 (301100)	F01-RTU-3-SAT (301100)	F01-RTU-3-NET-SA-CFM (301100)	F01-RTU-3-CALC-TOTAL-KW (301100)	<input checked="" type="checkbox"/>	Triggered		4	512	...	
12	F01-RTU-3-MPT12	F01-RTU-3-S/S (301100)	F01-RTU-3-CL-STG1 (301100)	F01-RTU-3-CL-STG2 (301100)	F01-RTU-3-SAT (301100)	F01-RTU-3-RAT (301100)	F01-RTU-3-MAT (301100)	F01-RTU-3-NET-RAH-CFM (301100)		<input checked="" type="checkbox"/>	Triggered		4	512	...	
13	F01-SAMPLE-MPT									<input type="checkbox"/>	Polled	00:00:00	4	512	...	

Figure 5 New Trend Log

## 1.7 To add points to the trend log select one of the point locations.

Instance	Name	Point 1	Point 2	Point 3	Point 4	Point 5	Point 6	Point 7	Point 8	Enable	Log Type	Interval	Bytes	Length	Description	Advanced
8	F01-RTU-3-HTG-MPT	F01-RTU-3-SYS (301100)	F01-RTU-3-FAN-AMPS (301100)	F01-RTU-3-HT-STG1 (301100)	F01-RTU-3-HT-STG2 (301100)	F01-RTU-3-SAT (301100)	F01-RTU-3-MAT (301100)	F01-RTU-3-PRG-ACT-RMT (301100)	F01-RTU-3-PRG-ADJ-HT-SP (301100)	<input checked="" type="checkbox"/>	Polled	00:10:00	4	512	...	⚙️
9	F01-RTU-3-KW-MPT	F01-RTU-3-CALC-SF-KW (301100)	F01-RTU-3-CALC-COMP1-KW (301100)	F01-RTU-3-CALC-COMP2-KW (301100)	F01-RTU-3-CALC-COND1-FAN-KW (301100)	F01-RTU-3-CALC-COND2-FAN-KW (301100)	F01-RTU-3-CALC-TOTAL-KW (301100)			<input checked="" type="checkbox"/>	Polled	00:02:00	4	512	...	⚙️
10	F01-RTU-3-AMPS-MPT	F01-RTU-3-SYS (301100)	F01-RTU-3-FAN-AMPS (301100)	F01-RTU-3-CL-STG1 (301100)	F01-RTU-3-CL-STG2 (301100)	F01-RTU-3-COMP1-AMPS (301100)	F01-RTU-3-COMP2-AMPS (301100)	F01-RTU-3-COND1-FAN-AMPS (301100)	F01-RTU-3-COND2-FAN-AMPS (301100)	<input checked="" type="checkbox"/>	Triggered		4	512	...	⚙️
11	F01-RTU-3-MPT11	F01-RTU-3-SYS (301100)	F01-RTU-3-CL-STG1 (301100)	F01-RTU-3-CL-STG2 (301100)	F01-RTU-3-HT-STG1 (301100)	F01-RTU-3-HT-STG2 (301100)	F01-RTU-3-SAT (301100)	F01-RTU-3-NET-SA-CFM (301100)	F01-RTU-3-CALC-TOTAL-KW (301100)	<input checked="" type="checkbox"/>	Triggered		4	512	...	⚙️
12	F01-RTU-3-MPT12	F01-RTU-3-SYS (301100)	F01-RTU-3-CL-STG1 (301100)	F01-RTU-3-CL-STG2 (301100)	F01-RTU-3-SAT (301100)	F01-RTU-3-RAT (301100)	F01-RTU-3-MAT (301100)	F01-RTU-3-RAH (301100)	F01-RTU-3-NET-SA-CFM (301100)	<input checked="" type="checkbox"/>	Triggered		4	512	...	⚙️
13	F01-SAMPLE-MPT									<input type="checkbox"/>	Polled	00:00:00	4	512	...	⚙️

Figure 6 Add Points to Log

## 1.8 Selecting one of the available point locations will open the trend log edit window.

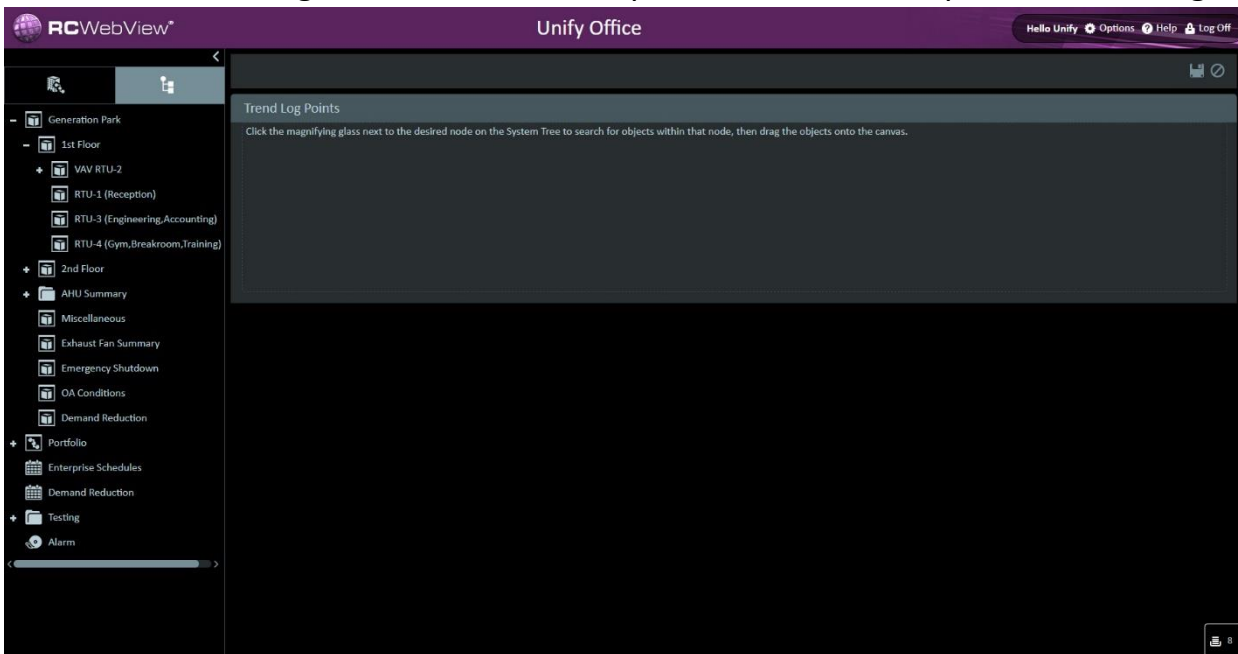


Figure 7 Log Edit View

## 1.9 Select the admin system tree on the top left of the navigation tree pane.

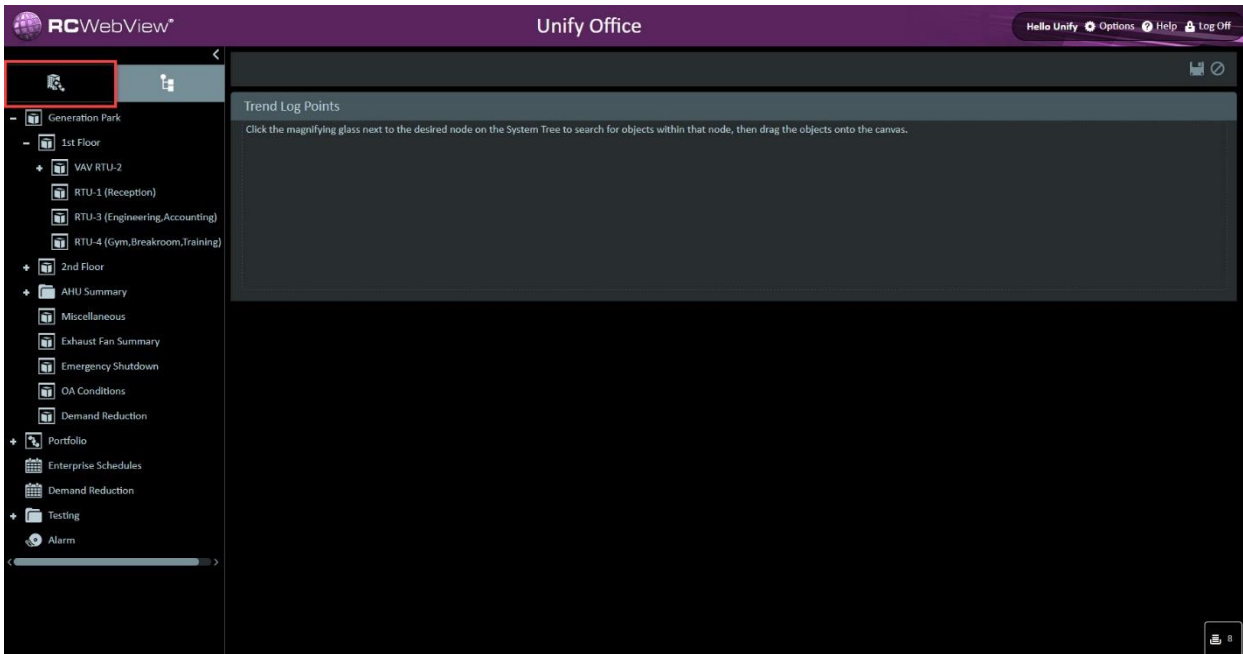


Figure 8 System Tree

## 1.10 Once the system tree is displayed expand systems then expand the system that the equipment you are working with is in.

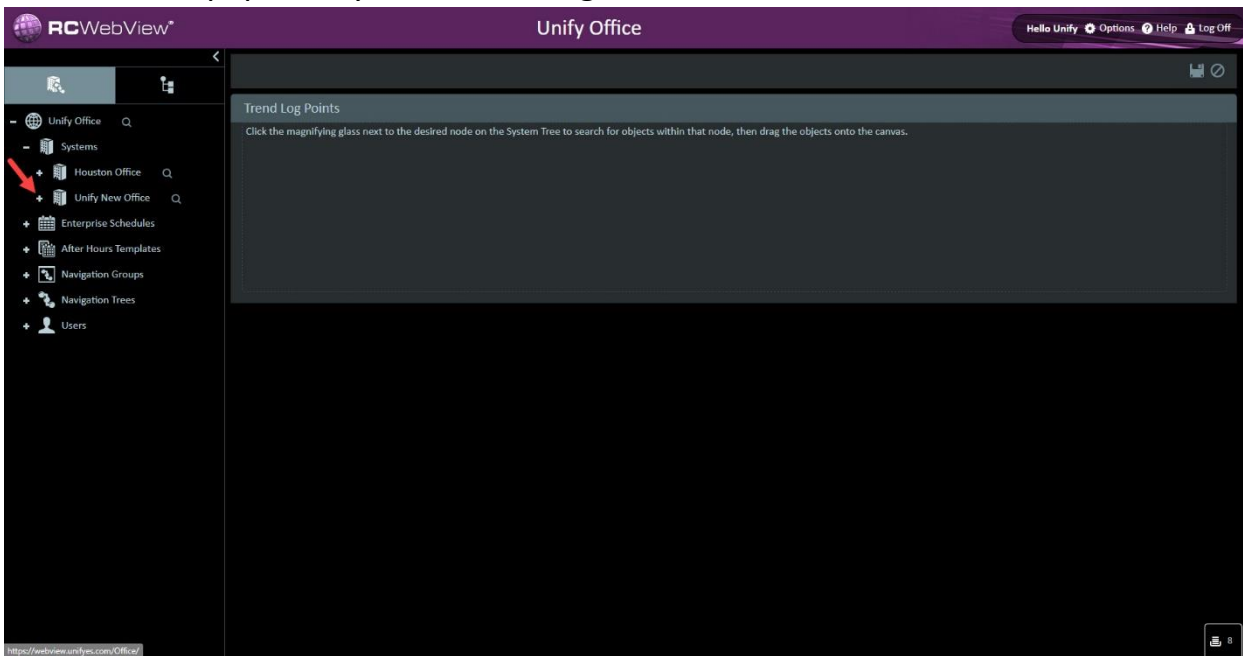


Figure 9 System Navigation

1.10.1 The system name can be found on the top of each system group along with the controller name, system group name and controller device ID as seen below

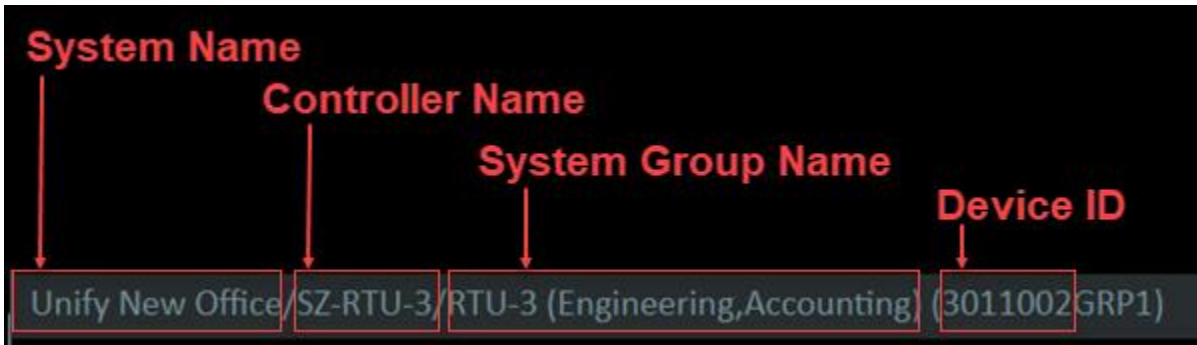


Figure 10 Information Breakdown

1.11 Scroll down to the controller in the system tree and left click the magnifying glass to the right of that controller

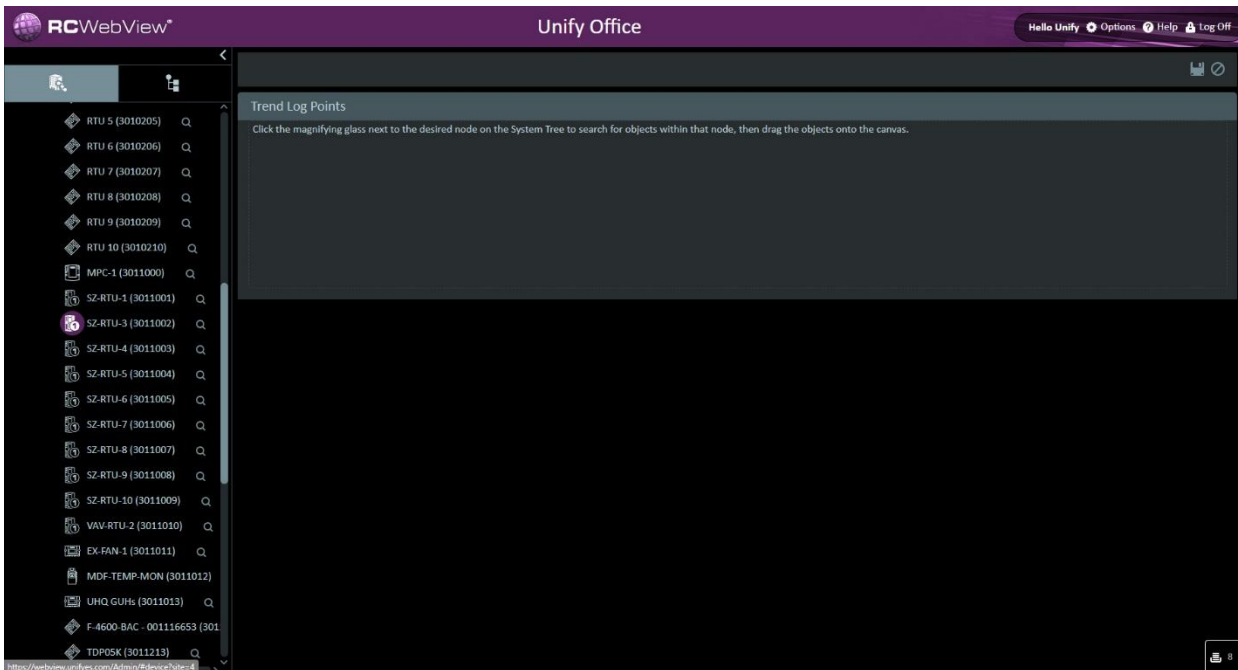


Figure 11 Controller Search

1.12 After selecting the magnifying glass the search results window will appear that will display all objects in that controller.

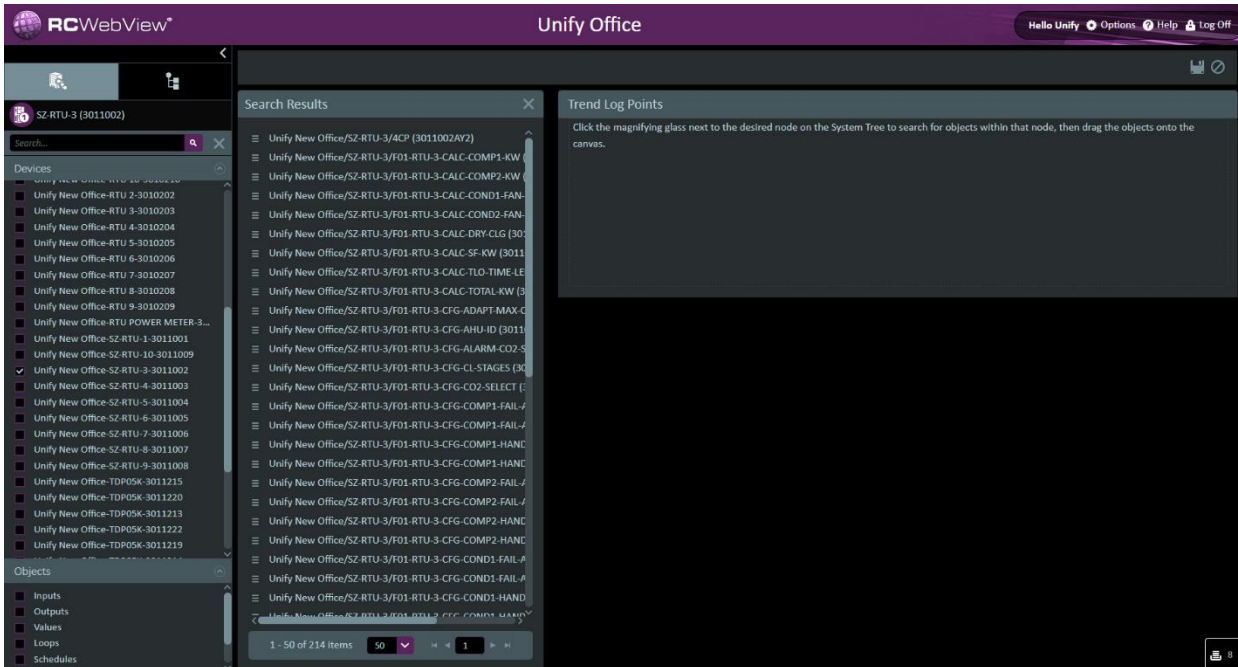


Figure 12 Search Results Pane

1.13 Under Objects on the lower left of the search pane the search can be narrowed by type. In this instance Inputs was selected which displayed all the inputs on that controller in the search results pane.

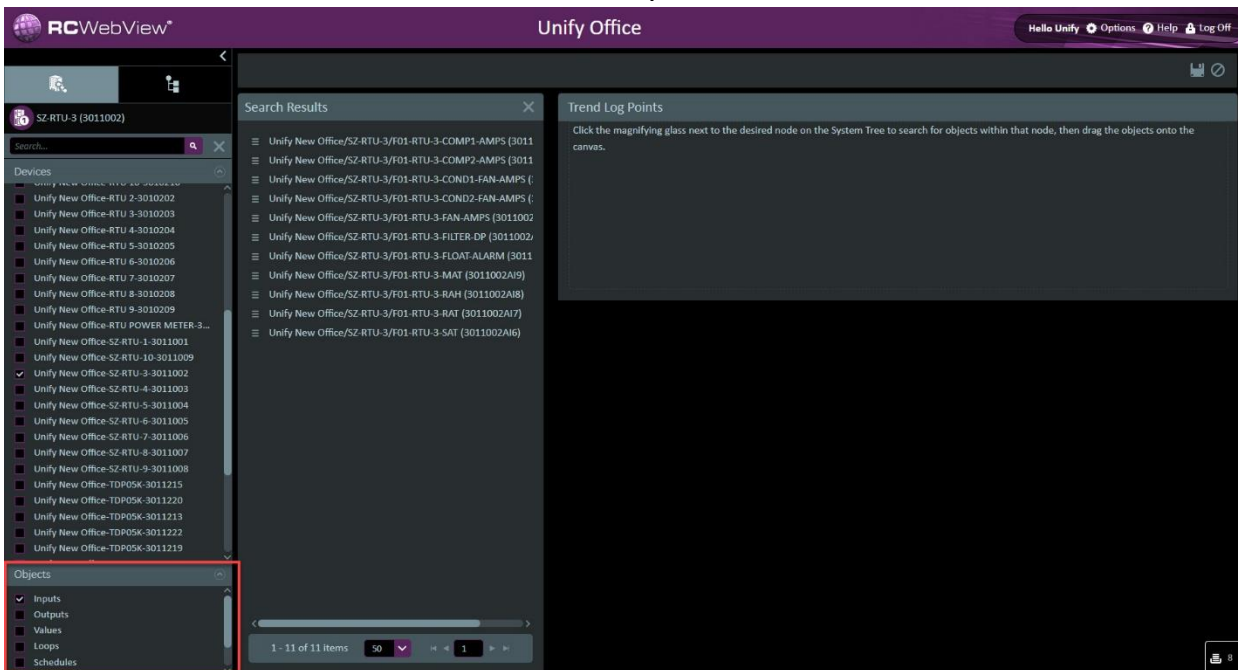


Figure 13 Search Functions

1.14 Multiple object types can be selected at one time or changed during the search process.

1.15 To add objects to the trend log left click and hold the desired object from the search results pane then drag and drop in the Trend Log Points pane. Control click and shift click are supported in the search results pane so multiple objects can be selected at one time and drug into the Trend Log Points pane.

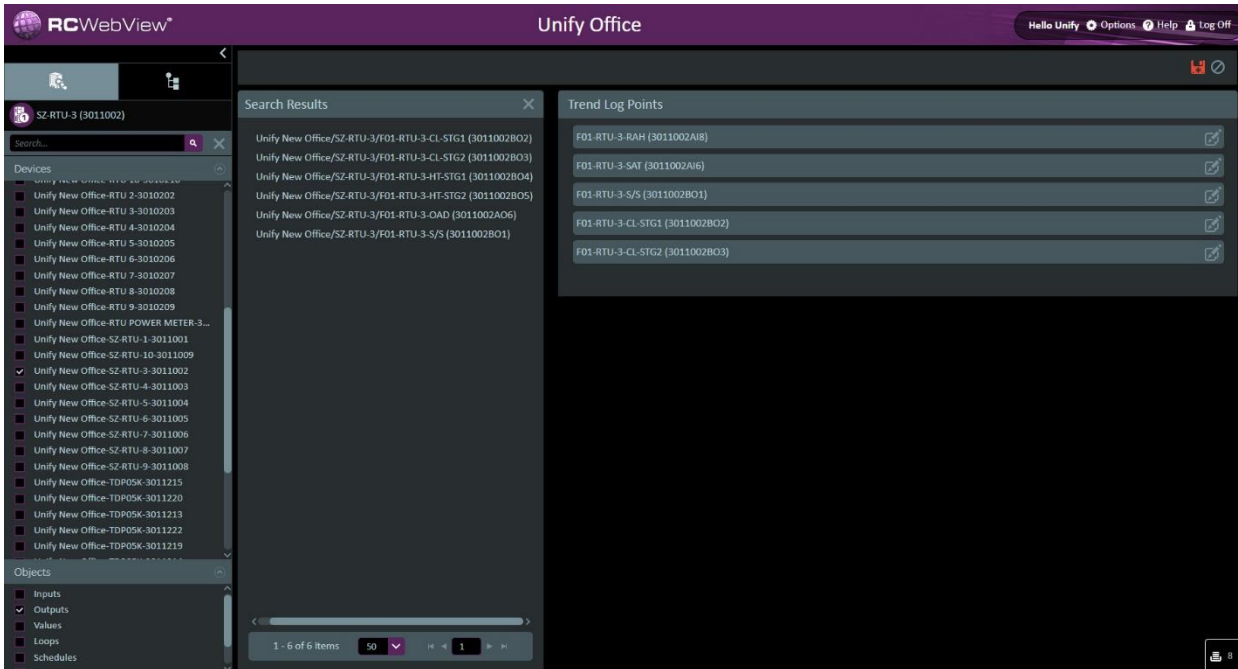


Figure 14 Add Points to Log

1.16 Using the search bar can assist with narrowing the search results further

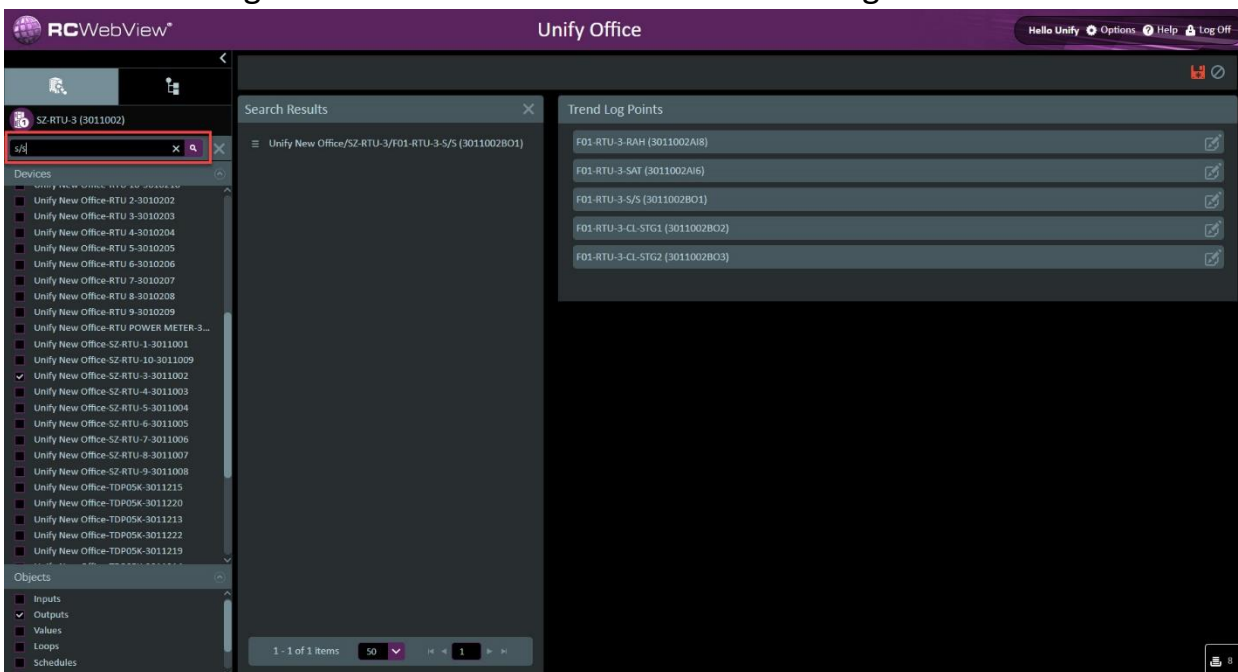


Figure 15 Search Bar

1.17 Once all points have been added select save on the upper right corner of the page

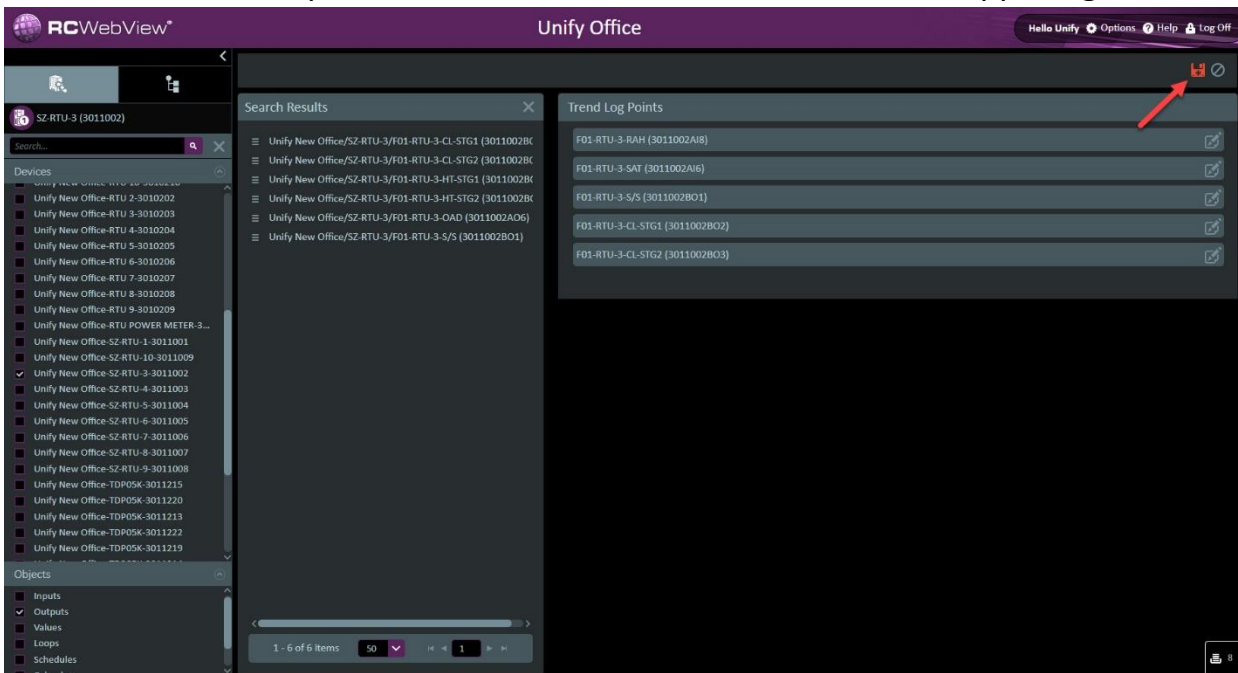


Figure 16 Save Icon

1.18 Once save is selected a pop up will be displayed notifying that the trend log data will be reset, select yes.

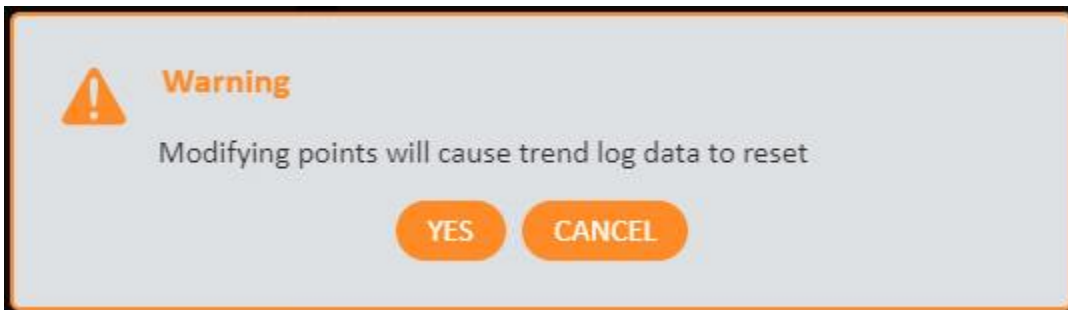


Figure 17 Data Reset Warning

1.18.1 It is important to note that previous data will be removed if editing an existing trend log. If data is needed it should be exported before editing the log.

1.19 Once the trend log has been created and all points entered, the interval will default to 00:00:00 and trend disabled.

Instance	Name	Point 1	Point 2	Point 3	Point 4	Point 5	Point 6	Point 7	Point 8	Enable	Log Type	Interval	Bytes	Length	Description	Advanced
8	F01-RTU-3-HTG-MPT	F01-RTU-3-S/S (301100)	F01-RTU-3-FAN-AMPS (301100)	F01-RTU-3-HT-STG1 (301100)	F01-RTU-3-HT-STG2 (301100)	F01-RTU-3-SAT (301100)	F01-RTU-3-MAT (301100)	F01-RTU-3-PRG-ACT-RMT (301100)	F01-RTU-3-PRG-ADJ-HT-SP (301100)	<input checked="" type="checkbox"/>	Polled	00:10:00	4	512	...	#
9	F01-RTU-3-KW-MPT	F01-RTU-3-CALC-SF-KW (301100)	F01-RTU-3-CALC-COMP1-KW (301100)	F01-RTU-3-CALC-COMP2-KW (301100)	F01-RTU-3-CALC-COND1-FAN-KW (301100)	F01-RTU-3-CALC-COND2-FAN-KW (301100)	F01-RTU-3-CALC-TOTAL-KW (301100)			<input checked="" type="checkbox"/>	Polled	00:02:00	4	512	...	#
10	F01-RTU-3-AMPS-MPT	F01-RTU-3-S/S (301100)	F01-RTU-3-FAN-AMPS (301100)	F01-RTU-3-CL-STG1 (301100)	F01-RTU-3-CL-COMP1-AMPS (301100)	F01-RTU-3-CL-STG2 (301100)	F01-RTU-3-CL-COMP2-AMPS (301100)	F01-RTU-3-COND1-FAN-AMPS (301100)	F01-RTU-3-COND2-FAN-AMPS (301100)	<input checked="" type="checkbox"/>	Triggered		4	512	...	#
11	F01-RTU-3-MPT11	F01-RTU-3-S/S (301100)	F01-RTU-3-CL-STG1 (301100)	F01-RTU-3-CL-STG2 (301100)	F01-RTU-3-HT-STG1 (301100)	F01-RTU-3-HT-STG2 (301100)	F01-RTU-3-SAT (301100)	F01-RTU-3-NET-SA-CFM (301100)	F01-RTU-3-CALC-TOTAL-KW (301100)	<input checked="" type="checkbox"/>	Triggered		4	512	...	#
12	F01-RTU-3-MPT12	F01-RTU-3-S/S (301100)	F01-RTU-3-CL-STG1 (301100)	F01-RTU-3-CL-STG2 (301100)	F01-RTU-3-SAT (301100)	F01-RTU-3-RAT (301100)	F01-RTU-3-MAT (301100)	F01-RTU-3-RAH-SA-CFM (301100)		<input checked="" type="checkbox"/>	Triggered		4	512	...	#
13	F01-SAMPLE-MPT	F01-RTU-3-RAH (301100)	F01-RTU-3-SAT (301100)	F01-RTU-3-S/S (301100)	F01-RTU-3-CL-STG1 (301100)	F01-RTU-3-CL-STG2 (301100)				<input type="checkbox"/>	Polled	00:00:00	4	512	...	#

Figure 18 Default Values

1.20 Enter the desired interval, typically 10 minutes, using the hour minute second format then select the enable check box. Once completed select save.

Instance	Name	Point 1	Point 2	Point 3	Point 4	Point 5	Point 6	Point 7	Point 8	Enable	Log Type	Interval	Bytes	Length	Description	Advanced
8	F01-RTU-3-HTG-MPT	F01-RTU-3-S/S (301100)	F01-RTU-3-FAN-AMPS (301100)	F01-RTU-3-HT-STG1 (301100)	F01-RTU-3-HT-STG2 (301100)	F01-RTU-3-SAT (301100)	F01-RTU-3-MAT (301100)	F01-RTU-3-PRG-ACT-RMT (301100)	F01-RTU-3-PRG-ADJ-HT-SP (301100)	<input checked="" type="checkbox"/>	Polled	00:10:00	4	512	...	⚙
9	F01-RTU-3-KW-MPT	F01-RTU-3-CALC-SF-KW (301100)	F01-RTU-3-CALC-COMP1-KW (301100)	F01-RTU-3-CALC-COMP2-KW (301100)	F01-RTU-3-CALC-COND1-FAN-KW (301100)	F01-RTU-3-CALC-COND2-FAN-KW (301100)	F01-RTU-3-CALC-TOTAL-KW (301100)			<input checked="" type="checkbox"/>	Polled	00:02:00	4	512	...	⚙
10	F01-RTU-3-AMPS-MPT	F01-RTU-3-S/S (301100)	F01-RTU-3-FAN-AMPS (301100)	F01-RTU-3-CL-STG1 (301100)	F01-RTU-3-CL-STG2 (301100)	F01-RTU-3-COMP1-AMPS (301100)	F01-RTU-3-CL-STG2 (301100)	F01-RTU-3-COMP2-AMPS (301100)	F01-RTU-3-COND1-FAN-AMPS (301100)	<input checked="" type="checkbox"/>	Triggered		4	512	...	⚙
11	F01-RTU-3-MPT11	F01-RTU-3-S/S (301100)	F01-RTU-3-CL-STG1 (301100)	F01-RTU-3-CL-STG2 (301100)	F01-RTU-3-HT-STG1 (301100)	F01-RTU-3-HT-STG2 (301100)	F01-RTU-3-SAT (301100)	F01-RTU-3-NET-SA-CFM (301100)	F01-RTU-3-CALC-TOTAL-KW (301100)	<input checked="" type="checkbox"/>	Triggered		4	512	...	⚙
12	F01-RTU-3-S/S	F01-RTU-3-S/S (301100)	F01-RTU-3-CL-STG1 (301100)	F01-RTU-3-CL-STG2 (301100)	F01-RTU-3-SAT (301100)	F01-RTU-3-RAT (301100)	F01-RTU-3-MAT (301100)	F01-RTU-3-RAH (301100)	F01-RTU-3-NET-SA-CFM (301100)	<input checked="" type="checkbox"/>	Triggered		4	512	...	⚙
13	F01-SAMPLE-MPT	F01-RTU-3-SAT (301100)	F01-RTU-3-S/S (301100)	F01-RTU-3-S/S (301100)	F01-RTU-3-CL-STG1 (301100)	F01-RTU-3-CL-STG2 (301100)				<input checked="" type="checkbox"/>	Polled	00:10:00	4	512	...	⚙

Figure 19 Save Configuration

1.21 To view the trend select the blue instance number to the left of each trend log

Instance	Name	Point 1	Point 2	Point 3	Point 4	Point 5	Point 6	Point 7	Point 8	Enable	Log Type	Interval	Bytes	Length	Description	Advanced
8	F01-RTU-3-HTG-MPT	F01-RTU-3-S/S (301100)	F01-RTU-3-FAN-AMPS (301100)	F01-RTU-3-HT-STG1 (301100)	F01-RTU-3-HT-STG2 (301100)	F01-RTU-3-SAT (301100)	F01-RTU-3-MAT (301100)	F01-RTU-3-PRG-ACT-RMT (301100)	F01-RTU-3-PRG-ADJ-HT-SP (301100)	<input checked="" type="checkbox"/>	Polled	00:10:00	4	512	...	⚙
9	F01-RTU-3-KW-MPT	F01-RTU-3-CALC-SF-KW (301100)	F01-RTU-3-CALC-COMP1-KW (301100)	F01-RTU-3-CALC-COMP2-KW (301100)	F01-RTU-3-CALC-COND1-FAN-KW (301100)	F01-RTU-3-CALC-COND2-FAN-KW (301100)	F01-RTU-3-CALC-TOTAL-KW (301100)			<input checked="" type="checkbox"/>	Polled	00:02:00	4	512	...	⚙
10	F01-RTU-3-AMPS-MPT	F01-RTU-3-S/S (301100)	F01-RTU-3-FAN-AMPS (301100)	F01-RTU-3-CL-STG1 (301100)	F01-RTU-3-CL-STG2 (301100)	F01-RTU-3-COMP1-AMPS (301100)	F01-RTU-3-CL-STG2 (301100)	F01-RTU-3-COMP2-AMPS (301100)	F01-RTU-3-COND1-FAN-AMPS (301100)	<input checked="" type="checkbox"/>	Triggered		4	512	...	⚙
11	F01-RTU-3-MPT11	F01-RTU-3-S/S (301100)	F01-RTU-3-CL-STG1 (301100)	F01-RTU-3-CL-STG2 (301100)	F01-RTU-3-HT-STG1 (301100)	F01-RTU-3-HT-STG2 (301100)	F01-RTU-3-SAT (301100)	F01-RTU-3-NET-SA-CFM (301100)	F01-RTU-3-CALC-TOTAL-KW (301100)	<input checked="" type="checkbox"/>	Triggered		4	512	...	⚙
12	F01-RTU-3-S/S	F01-RTU-3-S/S (301100)	F01-RTU-3-CL-STG1 (301100)	F01-RTU-3-CL-STG2 (301100)	F01-RTU-3-SAT (301100)	F01-RTU-3-RAT (301100)	F01-RTU-3-MAT (301100)	F01-RTU-3-RAH (301100)	F01-RTU-3-NET-SA-CFM (301100)	<input checked="" type="checkbox"/>	Triggered		4	512	...	⚙
13	F01-SAMPLE-MPT	F01-RTU-3-SAT (301100)	F01-RTU-3-S/S (301100)	F01-RTU-3-S/S (301100)	F01-RTU-3-CL-STG1 (301100)	F01-RTU-3-CL-STG2 (301100)				<input checked="" type="checkbox"/>	Polled	00:10:00	4	512	...	⚙

Figure 20 Select Instance to View

## 1.22 When the trend log is viewed the view can be toggled between data view and graph view depending on preference.

Unify New Office/SZ-RTU-3/3011002MTL13 (3011002MTL13)

Date / Time	F01-RTU-3-RAH	F01-RTU-3-SAT	F01-RTU-3-S/S	F01-RTU-3-CL-STG1	F01-RTU-3-CL-STG2
16 Wed, August 31, 2022, 02:50:06 PM	74.5	79.2	0.0	0.0	0.0
15 Wed, August 31, 2022, 02:40:07 PM	76.7	78.1	0.0	0.0	0.0
14 Wed, August 31, 2022, 02:30:06 PM	70.7	76.8	0.0	0.0	0.0
13 Wed, August 31, 2022, 02:20:06 PM	64.5	74.7	0.0	0.0	0.0
12 Wed, August 31, 2022, 02:10:07 PM	65.5	72.1	0.0	0.0	0.0
11 Wed, August 31, 2022, 02:00:06 PM	65.2	68.0	0.0	0.0	0.0
10 Wed, August 31, 2022, 01:50:06 PM	63.1	63.5	0.0	0.0	0.0
9 Wed, August 31, 2022, 01:40:07 PM	63.7	57.3	1.0	1.0	0.0
8 Wed, August 31, 2022, 01:30:06 PM	64.5	57.6	1.0	1.0	0.0
7 Wed, August 31, 2022, 01:20:06 PM	67.6	58.6	1.0	1.0	0.0
6 Wed, August 31, 2022, 01:10:07 PM	72.8	59.2	1.0	1.0	0.0
5 Wed, August 31, 2022, 01:00:06 PM	69.2	58.1	1.0	1.0	0.0
4 Wed, August 31, 2022, 12:50:06 PM	66.3	56.9	1.0	1.0	0.0
3 Wed, August 31, 2022, 12:40:06 PM	59.5	56.2	1.0	1.0	0.0
Wed, August 31, 2022, 12:34:49					

Figure 21 Data View

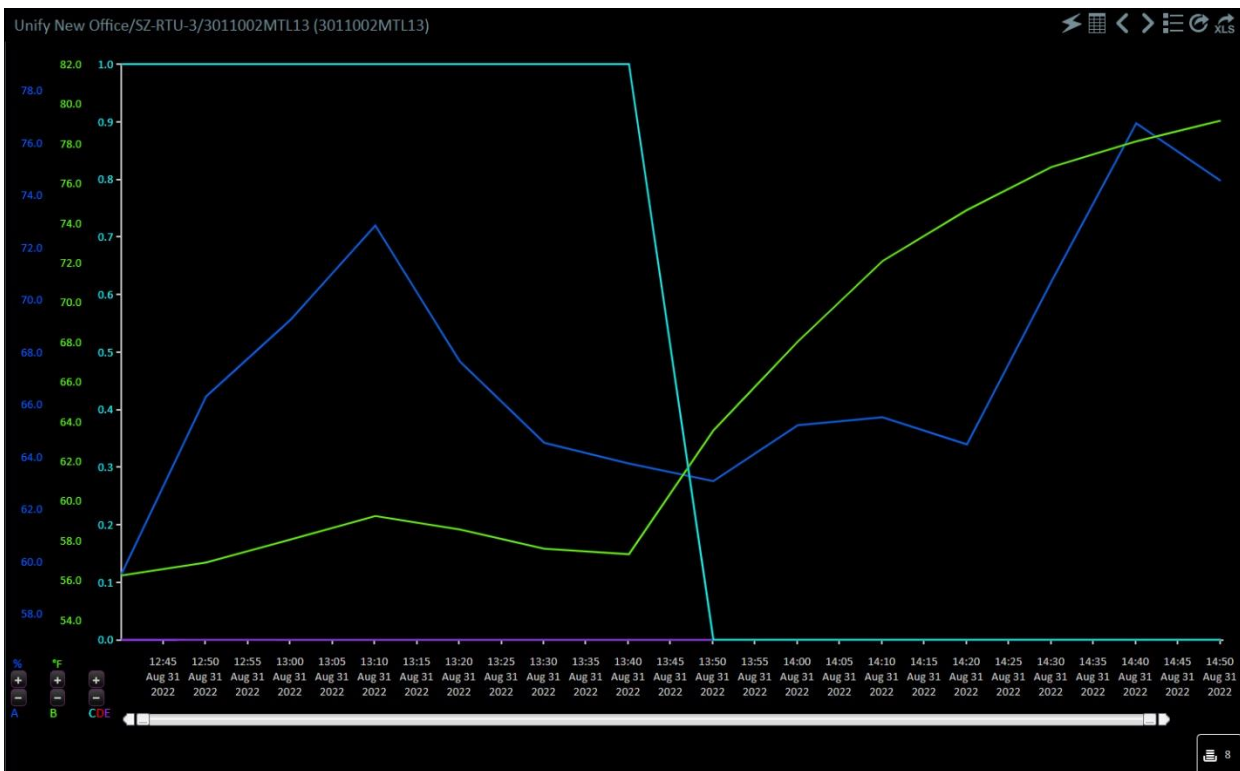


Figure 22 Graph View

## 2 Creating a new trend log from the system tree

2.1 This process can be used if the worksheet links are not available from the equipment graphics or if preferred.

2.2 Select the admin system tree on the top left of the navigation tree pane.

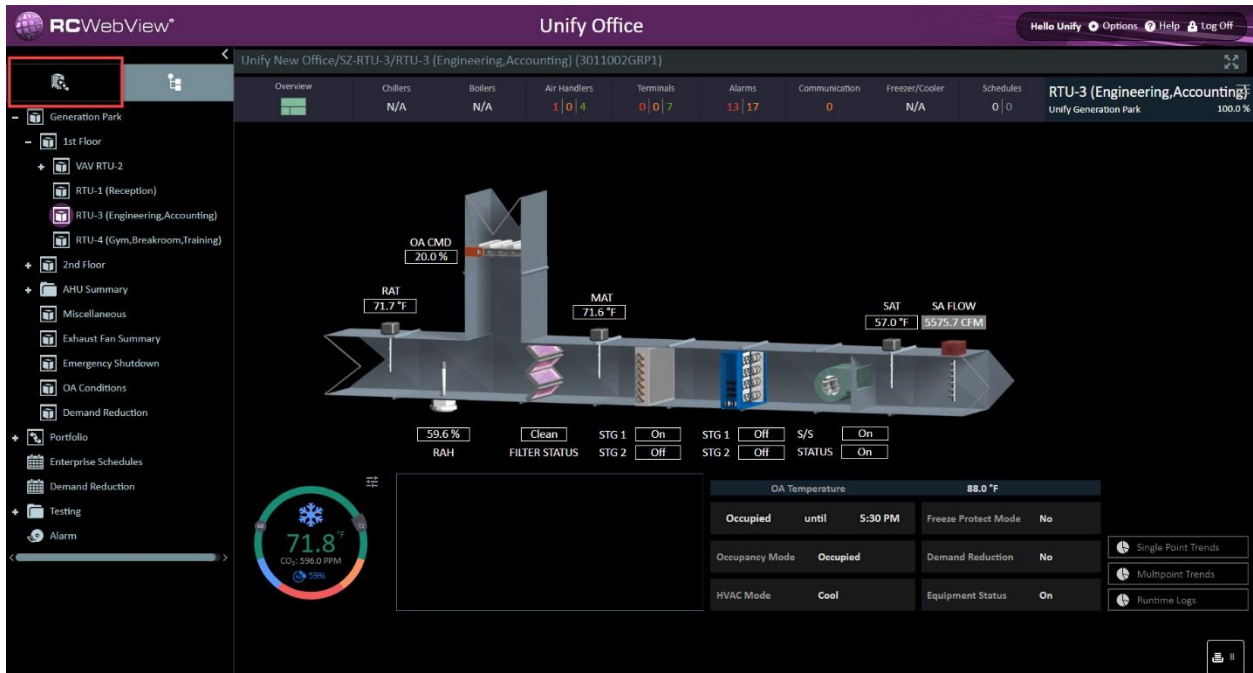


Figure 23 System Tree

2.1 Once the system tree is displayed expand systems then expand the system that the equipment you are working with is in.

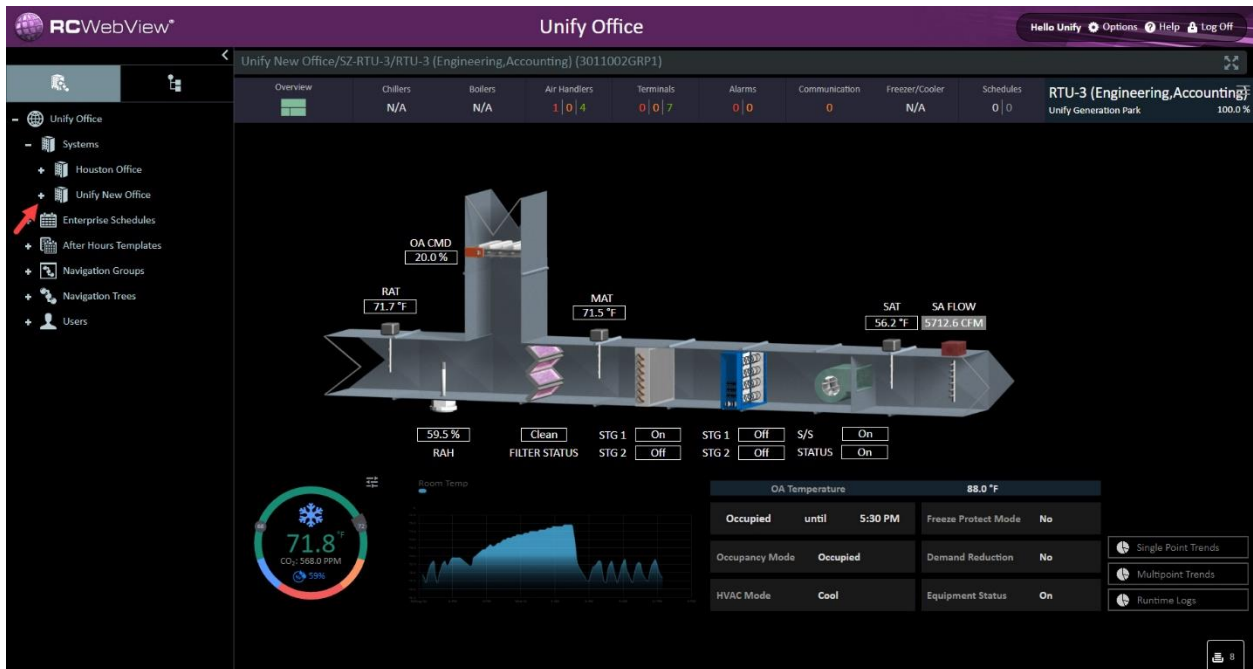


Figure 24 Expand System

2.1 Scroll down to the controller in the system tree and left click the controller to view the Device Worksheets flyout menu. Then select either Multipoint or Single Point Trend Logs.

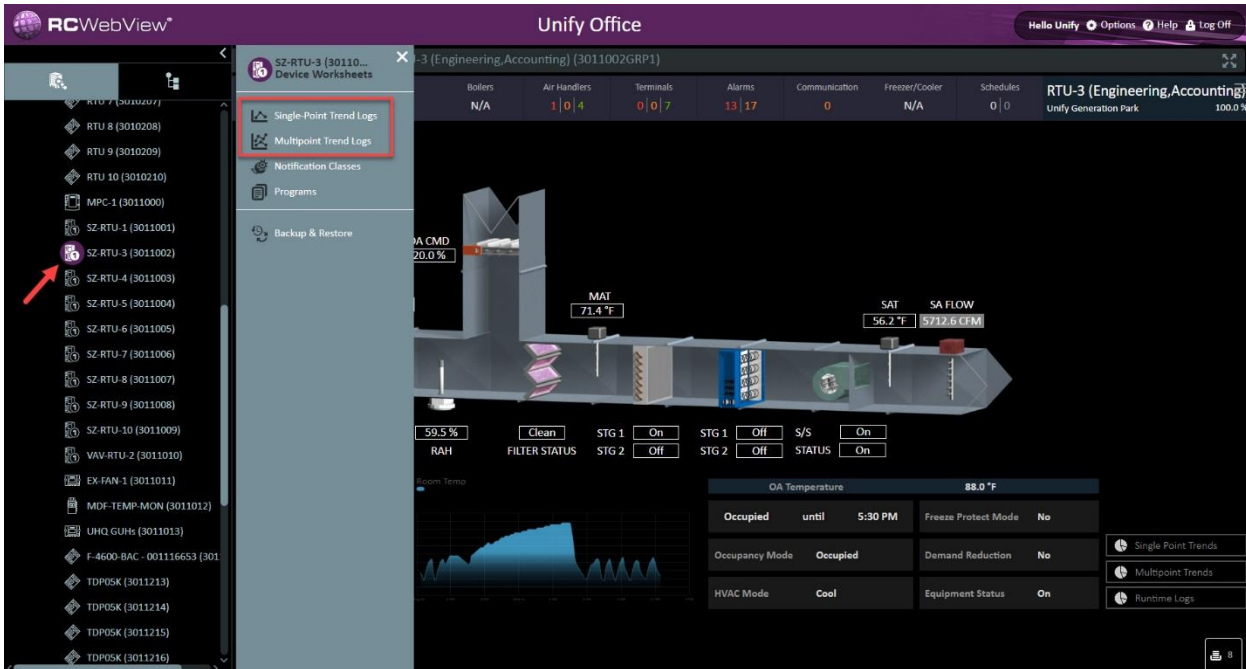


Figure 25 Device Worksheet

2.1.1 The system name can be found on the top of each system group along with the controller name, system group name and controller device ID as seen below

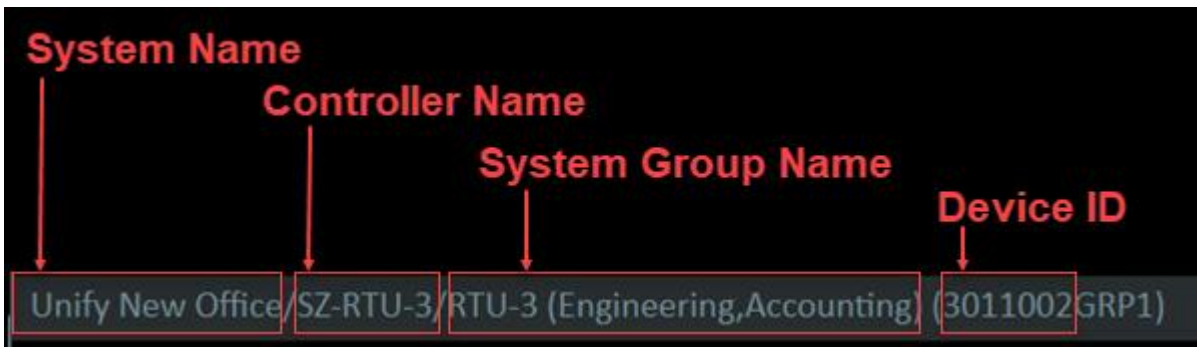


Figure 26 Information Breakdown

2.2 After selecting the appropriate link proceed with step 1.3.